



Desktop+ v1.2

[How to Register](#)

[Copyright Notice](#)

[Overview](#)

- [Cursors](#)
- [Screen Saver](#)
- [Sound Changer](#)
- [Wallpaper Animate](#)
- [Wallpaper Changer](#)

[Whats New & Version History](#)

[Where to find the latest Shareware Version](#)

[How to get Support](#)

How to Register

If you are using the Shareware version of **GTI Desktop+** you may evaluate it for 14 days, but if you wish to continue using it after this time you must register it.

To receive the registered version (or if you already have a copy of the registered version and wish to order additional copies) of **GTI Desktop+** and a free +Pack , please contact one of the Distributors listed below (**Note** the details below are for orders only, please refer to the How to get Support help topic for details of how to obtain Technical Support) :-

U.K. U.S.A. All other Countries

Alternatively if you have access to the *CompuServe* conferencing system you may register on-line by typing **go swreg** at any prompt and then follow the instructions on screen. **GTI Desktop+** swreg number is **6928**.

For details of Multiple User, Site Licenses or Customised Screen Savers & Wallpapers please contact G.T.I. at the above U.K. address or send e-mail to sales@gti.compulink.co.uk .

Note +Packs are only available from G.T.I.

Send your completed order to: **G.T.I. Ltd**
9 / 18 Mavisbank Gardens
Festival Park
Glasgow, G51 1HG
Scotland

Overview

GTI Desktop+ is a set of 5 utilities to enhance the look of & customise your MS Windows 3. X desktop.

The 5 components of GTI Desktop+ are

- [Cursors](#)
- [Screen Saver](#)
- [Sound Changer](#)
- [Wallpaper Animate](#)
- [Wallpaper Changer](#)

+Pack's

+Packs are add-on packages for **GTI Desktop+** that add extra *Cursors*, *Screen Savers*, *Animated Wallpaper* and *Wallpapers* to those which come as standard with **GTI Desktop+**.

+Pack 1 (Free with registered Version)

Includes 2 additional Photo Realistic screen savers/animated Wallpapers, additional cursors and several .bmp & .wav files

+Pack 2

Features the Videorama screen saver, which can turn any avi file into a screen saver. (Requires Video for Windows Runtime)

+Pack 3

Is a themed Lines & Shapes pack which includes several screen savers and wallpapers.

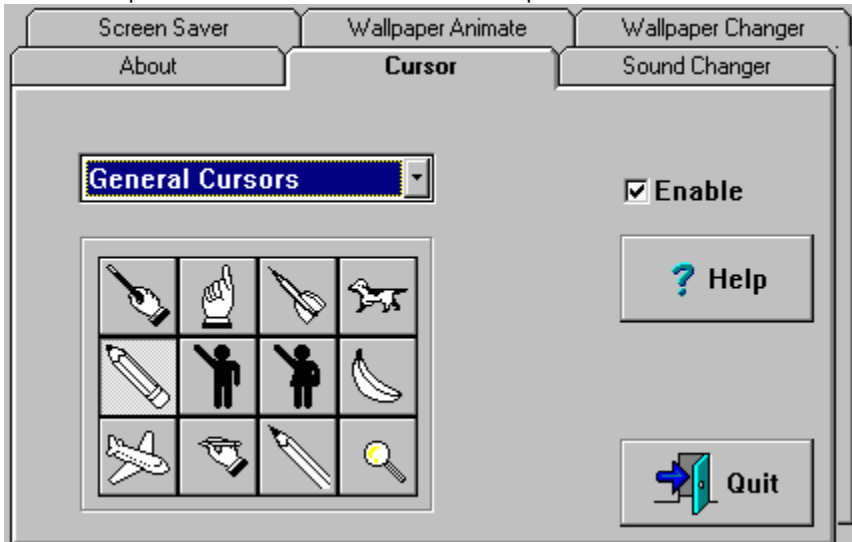
+Pack 4

Is a 3D themed pack. All screen savers & wallpapers feature 3D objects.

Cursors

The *Cursor* page allows you to change the standard Windows Cursor.

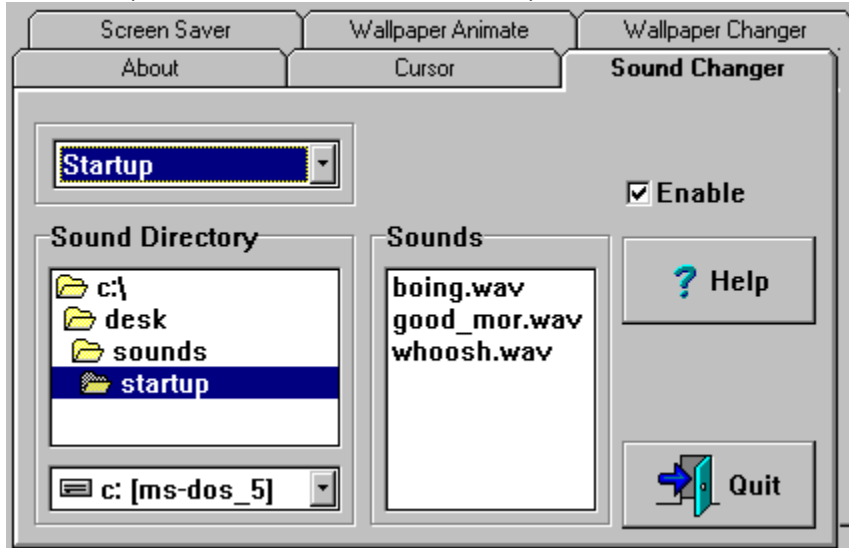
Click on the picture of the screen below for more help



Sound Changer

The *Sound Changer* randomly changes the Windows Startup & Exit sounds to one of the sounds in the currently selected directory.

Click on the picture of the screen below for more help



Wallpaper Animate

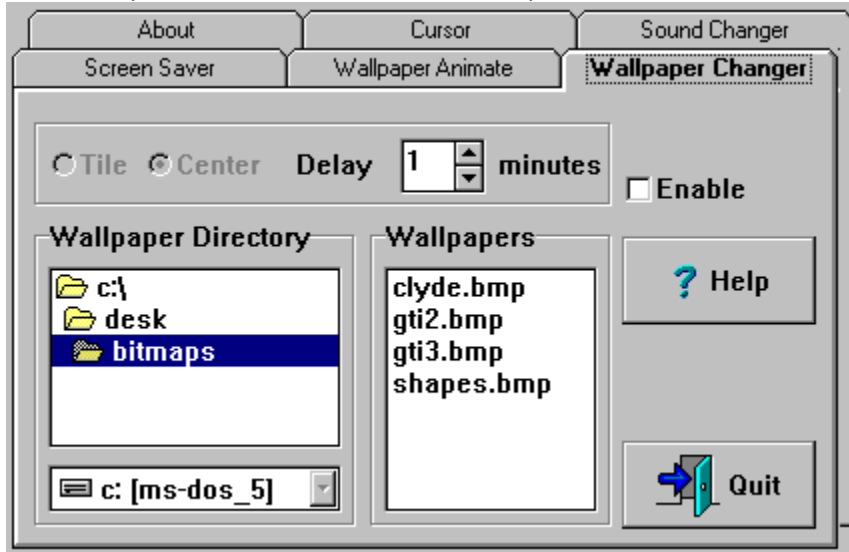
Click on the picture of the screen below for more help



Wallpaper Changer

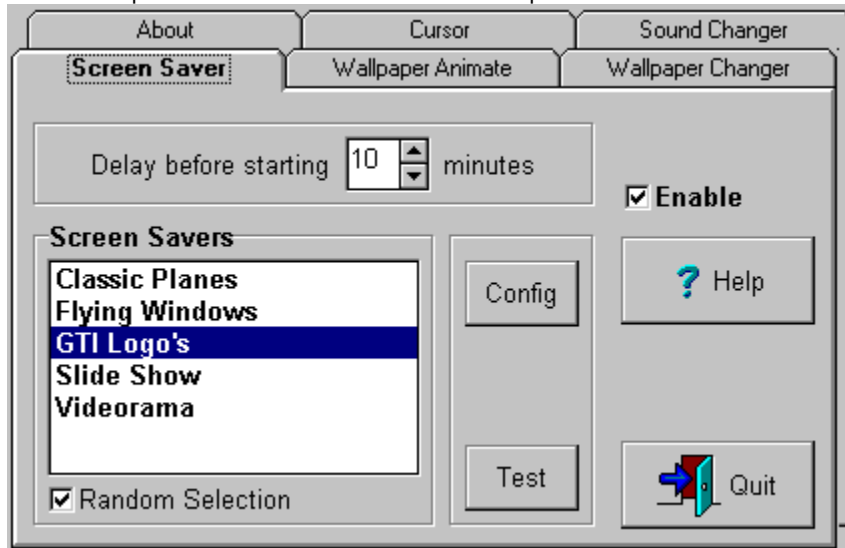
The wallpaper changer randomly changes the wallpaper to one of the wallpapers in the currently selected directory. The delay between changes is user configurable.

Click on the picture of the screen below for more help



Screen Saver

Click on the picture of the screen below for more help



If you have existing Screen Saver files that have a .SCR extension you can use [GTI Desktop+](#) to play these as well. Simply copy these files to the `ssaver` directory in the directory where you installed [GTI Desktop+](#) i.e. if you installed [GTI Desktop+](#) to the default directory you would copy your .SCR files to `c:\gtidesk\ssaver`.

Note Ensure you disable all other screen savers before activating the screen saver functions of [GTI Desktop+](#). For best results ensure you set your screen driver to at least 256 colours.

Enable Checkbox

Checking the *Enable* Checkbox will enable/disable the current tab pages functions.

Help Button

Press the help button to display the contents page of this help file.

For context sensitive help :-

Select the item you want to see help for

then press the **F1** key

Delay Spinner

Click on the up & down arrows to increase or decrease the delay (in minutes) before the function begins.

Wallpaper

Wallpaper is the term used for the background of your windows desktop. Please refer to your windows manuals for a more detailed explanation.

Quit Button

Press the Quit button to exit GTI Desktop+ .

Tab Pages

Click on the *Tab* to switch to that *Tab Page*.

Copyright Notice & License

GTI Desktop+ copyright © 1995 Graham Technology & Information Ltd. All rights reserved.

GTI Desktop+, GTI +Pack and the GTI logo are Trademarks of Graham Technology & Information Ltd.

All other Trademarks are acknowledged.

License (Shareware Version) License (Registered Version)

To find out which version of **GTI Desktop+** you are using, and therefore which of the above licenses apply to you, please refer to the *About* tab in the **GTI Desktop+ Control Centre**. This will state if you have the Shareware or Registered version of **GTI Desktop+**.

LIMITED WARRANTY AND DISCLAIMER OF WARRANTY

(Shareware & Registered Version)

THIS SOFTWARE AND ACCOMPANYING WRITTEN MATERIALS (INCLUDING INSTRUCTIONS FOR USE) ARE PROVIDED "AS IS" WITHOUT WARRANTY OF ANY KIND. FURTHER, GRAHAM TECHNOLOGY & INFORMATION LTD (GTI) DOES NOT WARRANT, GUARANTEE, OR MAKE ANY REPRESENTATIONS REGARDING THE USE, OR THE RESULTS OF USE, OF THE SOFTWARE OR WRITTEN MATERIALS IN TERMS OF CORRECTNESS, ACCURACY, RELIABILITY, CURRENTNESS, OR OTHERWISE. THE ENTIRE RISK AS TO THE RESULTS AND PERFORMANCE OF THE SOFTWARE IS ASSUMED BY YOU. IF THE SOFTWARE OR WRITTEN MATERIALS ARE DEFECTIVE YOU, AND NOT GTI OR ITS DEALERS, DISTRIBUTORS, AGENTS, OR EMPLOYEES, ASSUME THE ENTIRE COST OF ALL NECESSARY SERVICING, REPAIR, OR CORRECTION.

THE ABOVE IS THE ONLY WARRANTY OF ANY KIND, EITHER EXPRESS OR IMPLIED, INCLUDING BUT NOT LIMITED TO THE IMPLIED WARRANTIES OF MERCHANTABILITY AND FITNESS FOR A PARTICULAR PURPOSE, THAT IS MADE BY GTI, ON THIS GTI PRODUCT. NO ORAL OR WRITTEN INFORMATION OR ADVICE GIVEN BY GTI, ITS DEALERS, DISTRIBUTORS, AGENTS OR EMPLOYEES SHALL CREATE A WARRANTY OR IN ANY WAY INCREASE THE SCOPE OF THIS WARRANTY AND YOU MAY NOT RELY ON ANY SUCH INFORMATION OR ADVICE. YOU MAY HAVE OTHER RIGHTS WHICH VARY FROM STATE TO STATE.

NEITHER GTI NOR ANYONE ELSE WHO HAS BEEN INVOLVED IN THE CREATION, PRODUCTION OR DELIVERY OF THIS PRODUCT SHALL BE LIABLE FOR ANY DIRECT, INDIRECT, CONSEQUENTIAL OR INCIDENTAL DAMAGES (INCLUDING DAMAGES FOR LOSS OF BUSINESS PROFITS, BUSINESS INTERRUPTION, LOSS OF BUSINESS INFORMATION, AND THE LIKE) ARISING OUT OF THE USE OR INABILITY TO USE SUCH PRODUCT EVEN IF GTI HAS BEEN ADVISED OF THE POSSIBILITY OF SUCH DAMAGES.

THIS LIMITED WARRANTY SHALL BE GOVERNED BY THE LAWS OF SCOTLAND. THE UNITED NATIONS CONVENTION ON CONTRACTS FOR THE INTERNATIONAL SALE OF GOODS IS SPECIFICALLY DISCLAIMED.

BY USING GTI DESKTOP+ YOU ACKNOWLEDGE THAT YOU HAVE READ THIS LIMITED WARRANTY, UNDERSTAND IT, AND AGREE TO BE BOUND BY ITS' TERMS AND CONDITIONS. YOU ALSO AGREE THAT THE LIMITED WARRANTY IS THE COMPLETE AND EXCLUSIVE STATEMENT OF AGREEMENT BETWEEN THE PARTIES AND SUPERSEDE ALL PROPOSALS OR PRIOR AGREEMENTS, ORAL OR WRITTEN, AND ANY OTHER COMMUNICATIONS BETWEEN THE PARTIES RELATING TO THE SUBJECT MATTER OF THE LIMITED WARRANTY.

Directory Change Box

The directory change box allows you to set the default directory for the current function.

To change directory double-click through the icons until the directory you want is selected.

Drive Change Box

The drive change box lets you select the default drive for the current function.

To change the default drive click on the down arrow to list the available drives and then click on the drive you want to select

Sound Files

List of sound files in the current directory

Center Wallpaper

Click this if you want to center the wallpaper.

Tile Wallpaper

Click this if you want to tile the wallpaper.

Wallpaper List

List of wallpaper (.bmp) files in the current directory.

Screen Saver List

List of screen savers you can select. Click on the one you want to use.

Config Button

Lets you configure the currently selected screen saver.

Test Button

Launches the currently selected screen saver.

Cursor Buttons

Your default cursor will be set to the picture on which ever button you press.

Cursor List

List of the all the files containing custom cursors.

Animated Wallpaper List

List of animated wallpapers you can select. Click on the one you want to use.

Start Button

Starts the currently selected animated wallpaper.

Stop Button

Stops the animated wallpaper.

Sound To Change

Lets you set whether you want the currently directory to be used for both startup & exit sounds or just startup sounds or just exit sounds.

License (Shareware Version)

This version of GTI Desktop+ is released as Shareware. This means you may evaluate it for 14 days, but if you wish to continue using it after that time you must register it. See the help topic [How to Register](#) for more information.

Distribution

You are encouraged to pass a copy of the Shareware version of GTI Desktop+ along to your friends and colleagues for evaluation. You may also upload copies of it to bulletin boards.

If you do so, you must include all the GTI Desktop+ shareware files.

If you include **GTI Desktop+** as part of a commercially released Shareware Collection or as part of a Magazine or Book cover disk you must clearly state that a separator registration fee is payable to the Package Author (or their Agents) to continue using Shareware beyond the evaluation period.

License (Registered Version)

Grant of License. G.T.I. Ltd grants to you the right to use one (1) copy of the enclosed G.T.I. program (the "Software") on a single computer. For purposes of this section, "use" means loading the Software into RAM, as well as installation on a hard disk or other storage device.

You may not: rent, lease, modify, translate, disassemble, decompile, reverse engineer, or create derivative works based upon the Software.

The Software, together with any archive copy thereof, shall be either returned to G.T.I. or destroyed when no longer used in accordance with this Agreement, or when the right to use the Software is terminated.

If you wish to order additional copies please refer to the help topic [How to Register](#) for more information.

Distribution

You MUST NOT pass on to anyone copies of this version of **GTI Desktop+** or upload it to Bulletin Boards. This is a registered version, it is NOT SHAREWARE.

Whats New & Version History

New for Version 1.2

- Shareware Version time limited to 14 days
- Randomizer added to Screen Saver
- Support added for standard windows .SCR screen savers

Bugs fixed in Version 1.2

- Crash when bitmap directory not present
- Animated Wallpaper not clearing screen when stopped

Version 1.1 First version generally released

- Fixed screen saver stopping after few mins bug

Version 1.0 Initial Version limited release

How to get Support

If you have any problems with **GTI Desktop+** please send an E-Mail message to

support@gti.compulink.co.uk

Please include a full description of the problem, the version of **GTI Desktop+** , the configuration of your PC and any other information you feel may be relevant to the problem.

Note Support is ONLY guaranteed for registered users. However we will attempt to provide support whenever possible for users of the Shareware version.

Random Selection

If you want a different screen saver to play each time, click on this box.

U.K. (& Other non US Registrations)

To register **GTI Desktop+** complete the [registration form](#) and send £20* (sterling) or \$40* (US), per copy to

G.T.I. Ltd
Unit 9
18 Mavisbank Gardens
Festival Park
Glasgow
G51 1HG
Scotland

* Residents of the E.U. please also add VAT @ 17.5%

Northstar Solutions (U.S.A.)

Registering **GTI Desktop+** costs \$40 (US). To register **GTI Desktop+** call *Northstar Solutions* anytime between 10am to 10pm (EST) on

1-800-699 6395

1-803-699-6395 (Calls from outside USA)

or FAX the completed [registration form](#) to *Northstar Solutions* 24 hrs a day on

1-803-699-5465

or send the completed [registration form](#) along with a check or money order or your credit card details to

Northstar Solutions

P.O. Box 25262

Columbia,

SC 29224

or you could even send the completed [registration form](#) via e-mail to

America Online CompuServe Internet

STARMAIL 71561,2751 STARTMAIL@AOL.COM

Whatever method you use to register please ensure you have the following information ready :-

Your mailing address, Disk size you want, Your Visa/MC card number & expiration date (if using credit card)

and of course state that you wish to register **GTI Desktop+** V1.2.

Note *Northstar Solutions* can not provide product/technical support for support please refer to the [How to get Support](#) help topic

U.S. Distributors

Northstar Solutions
Pik - A - Program

Pik - A - Program (U.S.A.)

Registering **GTI Desktop+** costs \$40 (US) per copy plus \$4 post and packing per order. To register **GTI Desktop+** call *Pik-A-Program* (7 days a week) on

1-800-TOREGISTER (867-3447)
(212) 598-4939 (Calls from outside USA)

or FAX the completed [registration form](#) to *Pik-A-Program* 24 hrs a day on

(212) 228 5879

or send the completed [registration form](#) along with a check or money order or you credit card details to

Pik A Program
13 Saint Marks Place
NY, NY 10003

or you could even send the completed [registration form](#) via e-mail to

CompuServe Internet
74777,3233 74777.3233@compuserve.com

(Pik-A-Program can accept Visa, Mastercard, Eurocard, American Express & Discover credit cards)

Whatever method you use to register please ensure you have the following information ready :-

Your mailing address, Disk size you want, Your credit card number & expiration date (if using credit card)

and of course state that you wish to register **GTI Desktop+** V1.2.

Note *Pik-A-Program* can not provide product/technical support, for support please refer to the [How to get Support](#) help topic

For the very latest Shareware Version of **GTI Desktop+** take a look at the [Software Creation BBS](#)

Where to find the latest Shareware Version

You will find the latest shareware version of **GTI Desktop+** in the following places.

[Compulink Information Exchange \(CIX\)](#) (UK based)

[CompuServe](#) (World-wide)

[Internet FTP archives](#) (World-wide)

[Software Creations BBS](#) (U.S. Based)

CIX

CIX is a UK based subscription conferencing system. You will find the latest version of **GTI Desktop+** in the *2newfiles* topic of the *filepool* conference.

CIXs phone number is 0181 296 1255 all speeds upto V.34 are supported.

Via the Internet telnet to cix.compulink.co.uk .

CompuServe

CompuServe is a world-wide subscription conferencing system. You will find the latest version of **GTI Desktop+** in library S20 of the *winav* forum.

Software Creations BBS

You can reach the Software Creation BBS at the following numbers:

(508) 365-2359 - 2400 Baud V42 MNP5

(508) 368-7036 - 14.4K V32(BIS) DS

(508) 368-4137 - 16.8k HST USR

Internet FTP archives

You will find the latest version of [GTI Desktop+](#) on many FTP archives including Cica & Simtel mirror sites.

GTI Desktop+ V1.2 Registration Form (Pik-A-Program)

Name: _____

Address: _____

City: _____

Zip/Post Code: _____ State/Country: _____

E-Mail: _____

Please send me :-

	(US)	Sub Total
____ Copies GTI Desktop+ (& +Pack 1)	\$40.00	____
Shipping	\$4.00	\$4.00

TAX (NYS residents only) ___ % _____

Total Enclosed is _____

I am paying by:

- CHECK VISACARD MASTERCARD AMERICAN EXPRESS
 CASH (by registered mail only, please) DISCOVER CARD

Card Number Number _____ - _____ - _____ - _____ Exp. date ____ - ____

(Signature) (Date) _____

Make checks payable to: **Pik - A - Program**

Where did you hear about GTI Desktop+ ?

Comments: _____

Send your completed order to: **Pik A Program**

13 Saint Marks Place

NY, NY 10003

GTI Desktop+ V1.2 Registration Form (Northstar)

Name: _____

Address: _____

City: _____

Zip/Post Code: _____ State/Country: _____

E-Mail: _____

Please send me :-

	(US)	Sub Total
_____ Copies GTI Desktop+ (& +Pack 1)	\$40.00	_____

Total Enclosed is _____

I am paying by:

CHECK VISACARD MASTERCARD CASH (by registered mail only, please)

Card Number Number _____ - _____ - _____ - _____ Exp. date ____ - ____

(Signature) (Date)

Make checks payable to: **Northstar Solutions**

Where did you hear about GTI Desktop+ ?

Comments: _____

Send your completed order to: **Northstar Solutions**

P.O. Box 25262
Columbia,
SC 29224

